

# Photoweeek Northwest

for the week of **VI.I.2009**

*“Spring at Hurricane Creek”*

photos & texts by Cliff Crego

[picture-poems.com](http://picture-poems.com)









Twin Peaks at c. 2900 m.,  
*above Hurricane Valley*



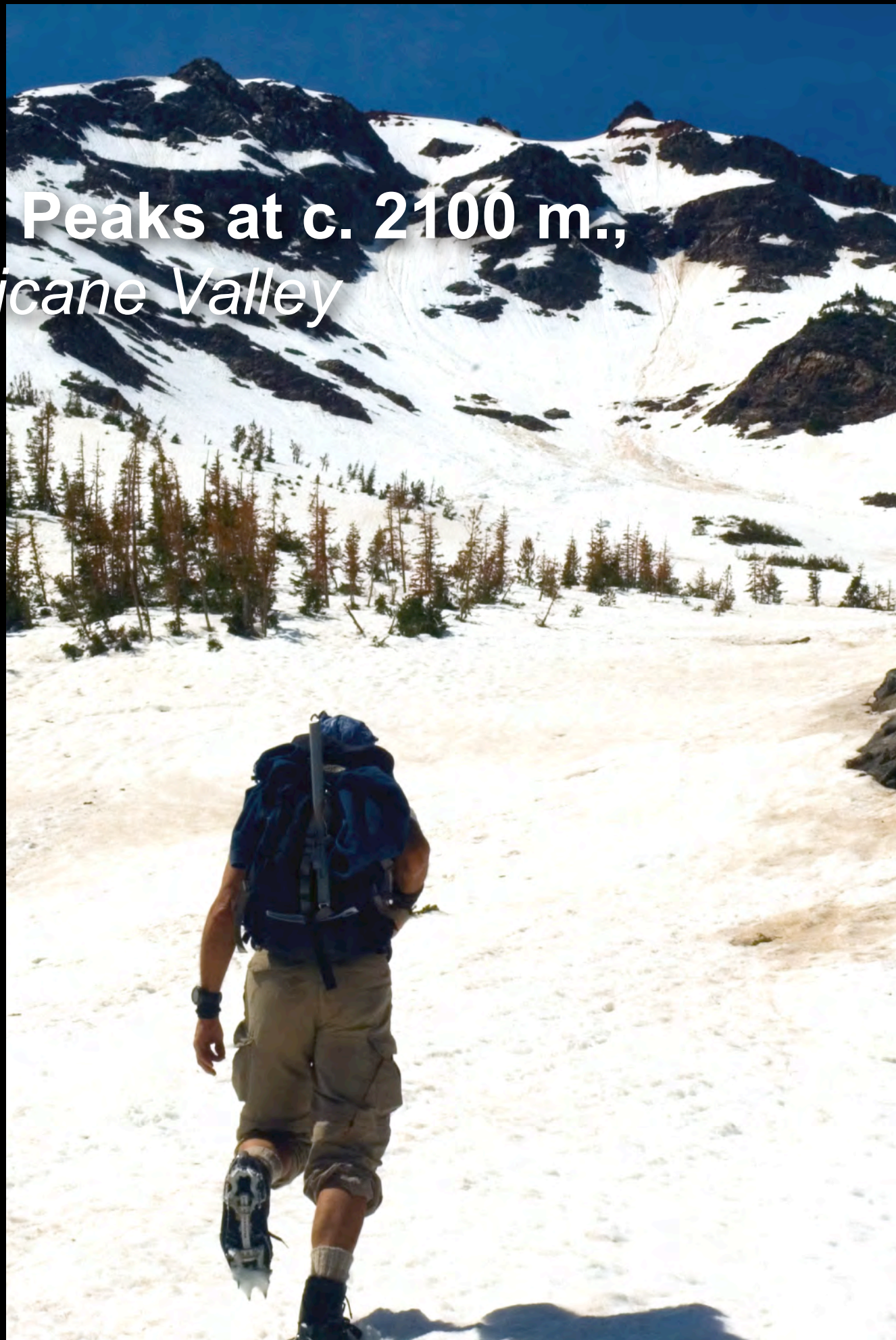


**Twin Peaks at c. 2900 m.,**  
*above Hurricane Valley, view to Southeast . . .*





*below Twin Peaks at c. 2100 m.,  
above Hurricane Valley*



*Metaphor?* A movement of resonance perhaps, a rhyming not of sounds or words, but of meaning.

Do you not know this light and quick movement of energy as two separate thoughts touch wings and fly off into the distance together?



# Fern, under Rocky Mountain Maple







same fern, *skyview* . . .



# Small False Solomon's Seal *Hurricane Valley*



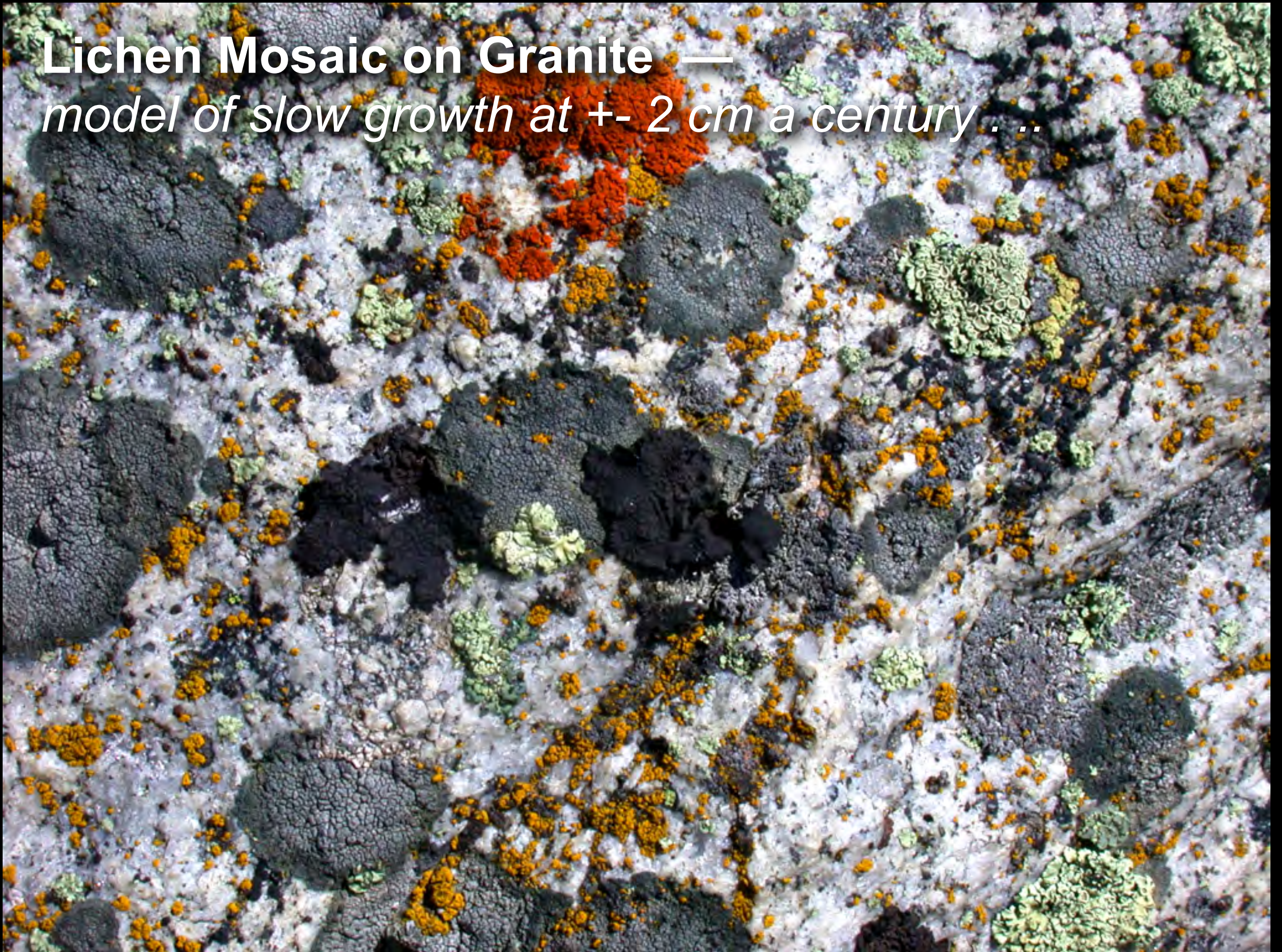


**Small False Solomon's Seal** *Hurricane Valley—  
close-up of flowers*





**Lichen Mosaic on Granite —**  
*model of slow growth at  $\pm 2$  cm a century . .*





**Granite Erratic Wallowa Lake—**  
*a rock left behind by the glacier that created  
the great lateral moraine seen above . . .*

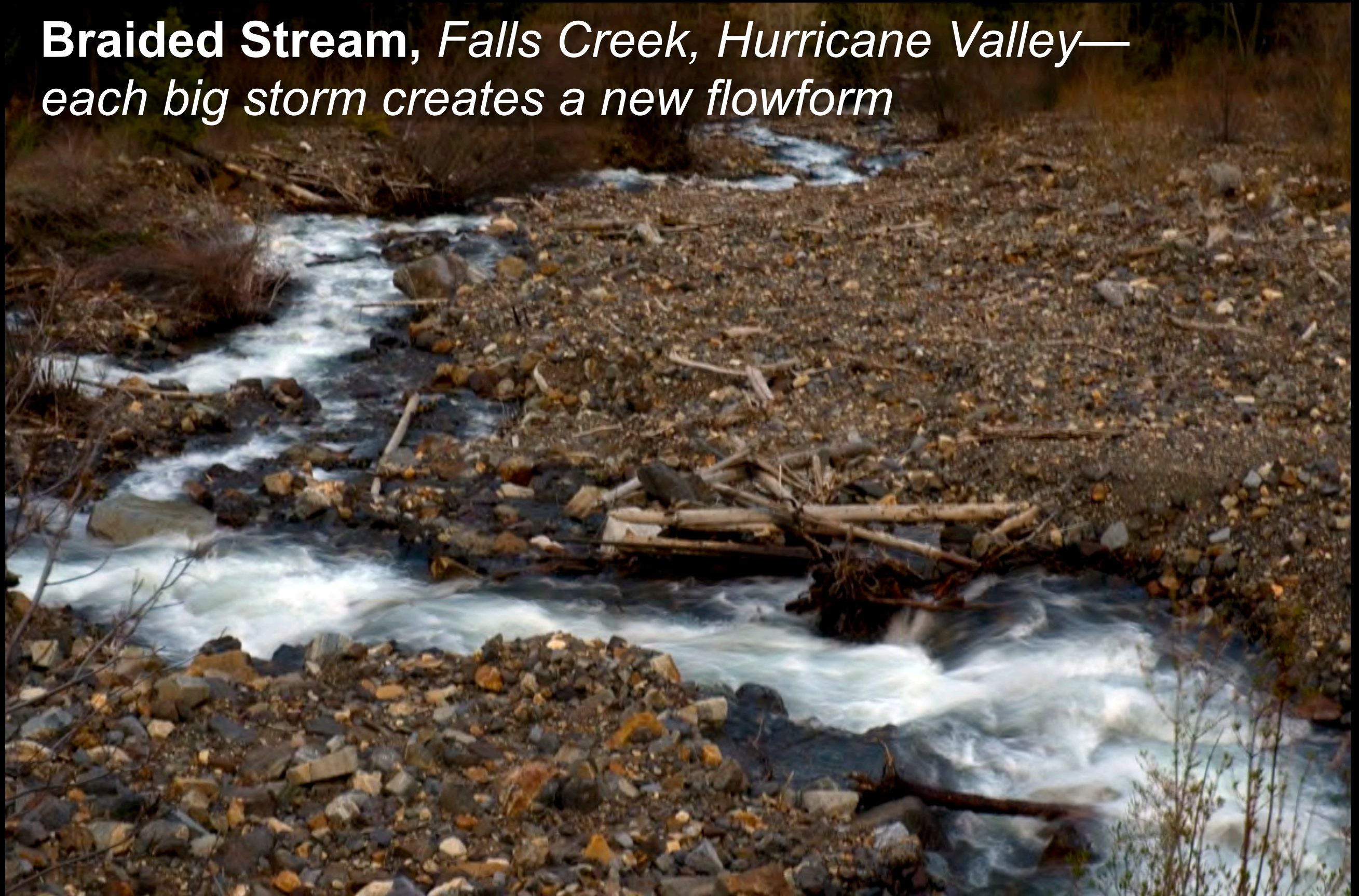






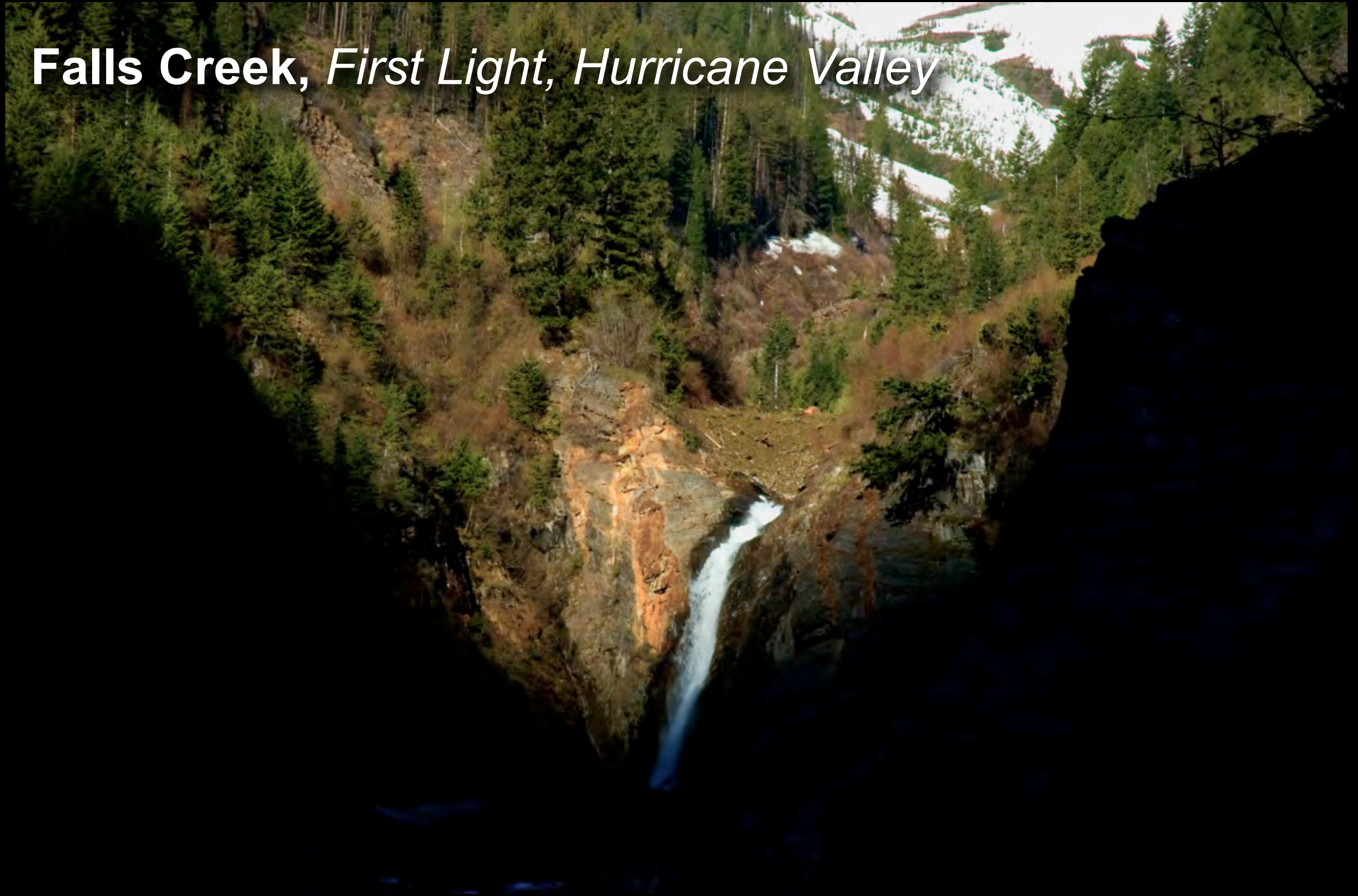


**Braided Stream, *Falls Creek, Hurricane Valley—***  
*each big storm creates a new flowform*





# Falls Creek, *First Light*, Hurricane Valley





# Flowforms, spring *Hurricane Creek*













# Little Granite Creek, *Hurricane Valley*





In limit, there is freedom; in freedom, there is limit. Even the wildest of rivers creates itself the boundaries of the bed that order its flow.



# **Slick Rock, *May, Hurricane Valley***



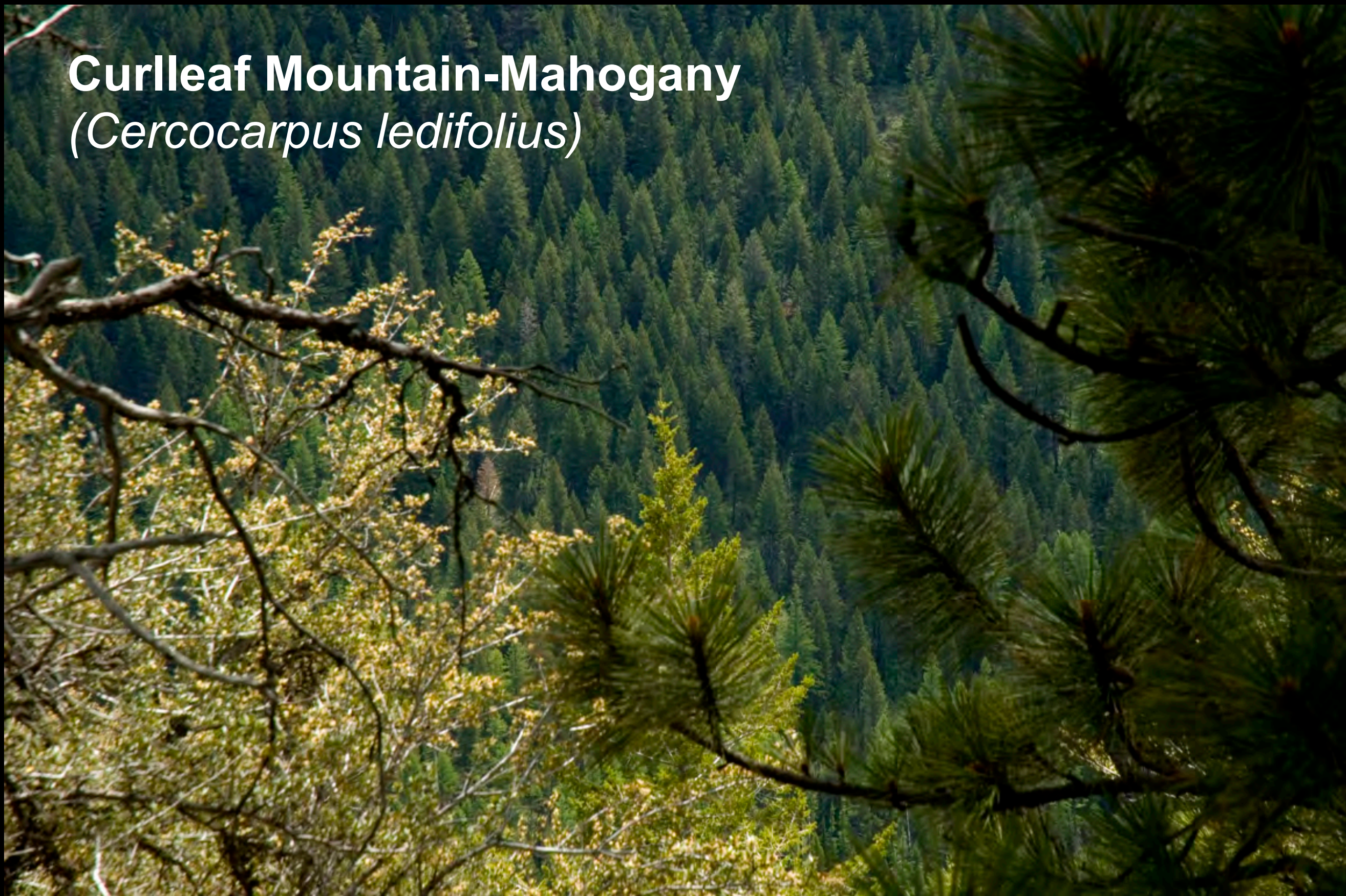


**Lake Frances at 2300 m.**



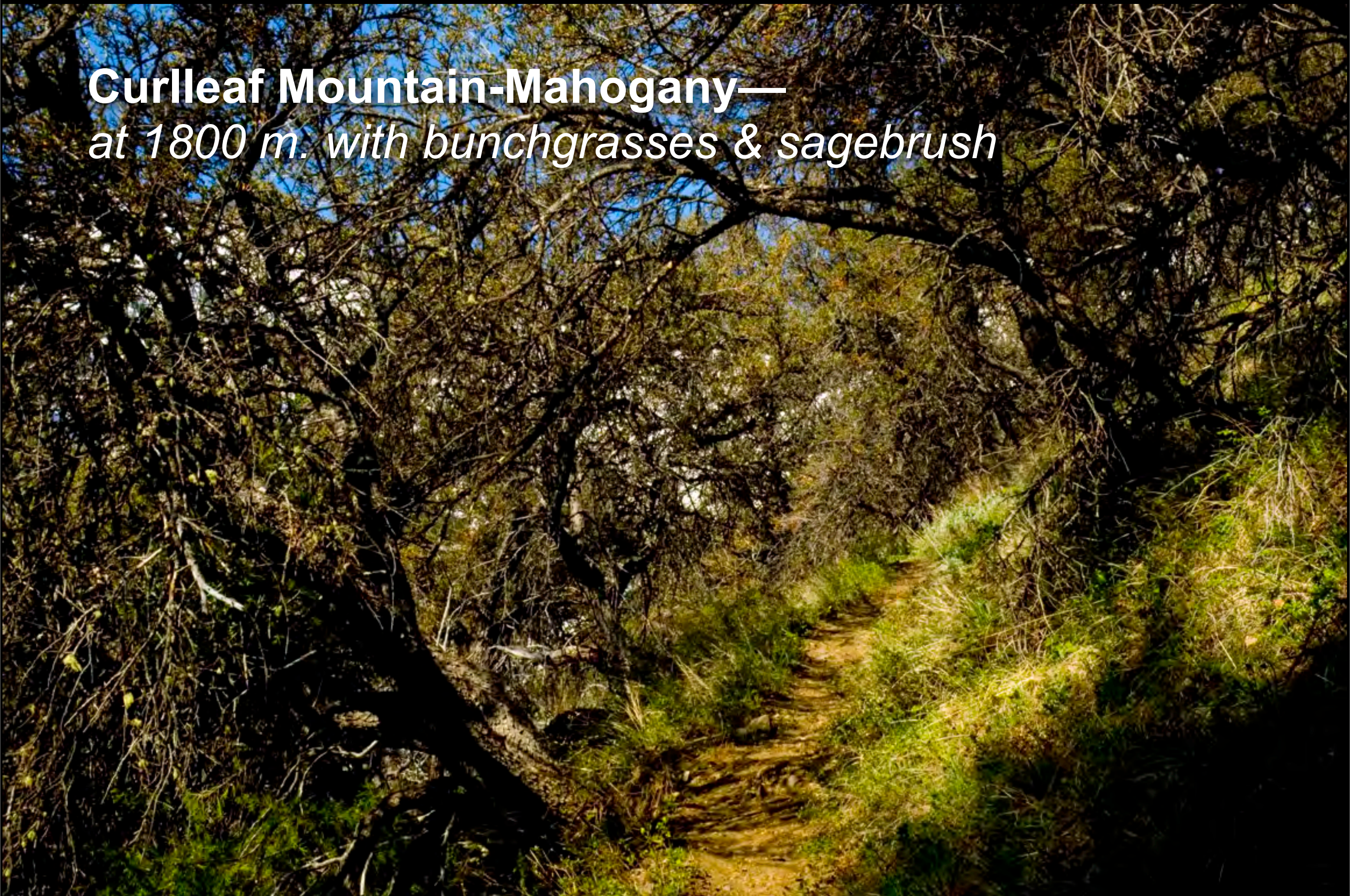


**Curleaf Mountain-Mahogany**  
(*Cercocarpus ledifolius*)





**Curleaf Mountain-Mahogany—**  
*at 1800 m. with bunchgrasses & sagebrush*



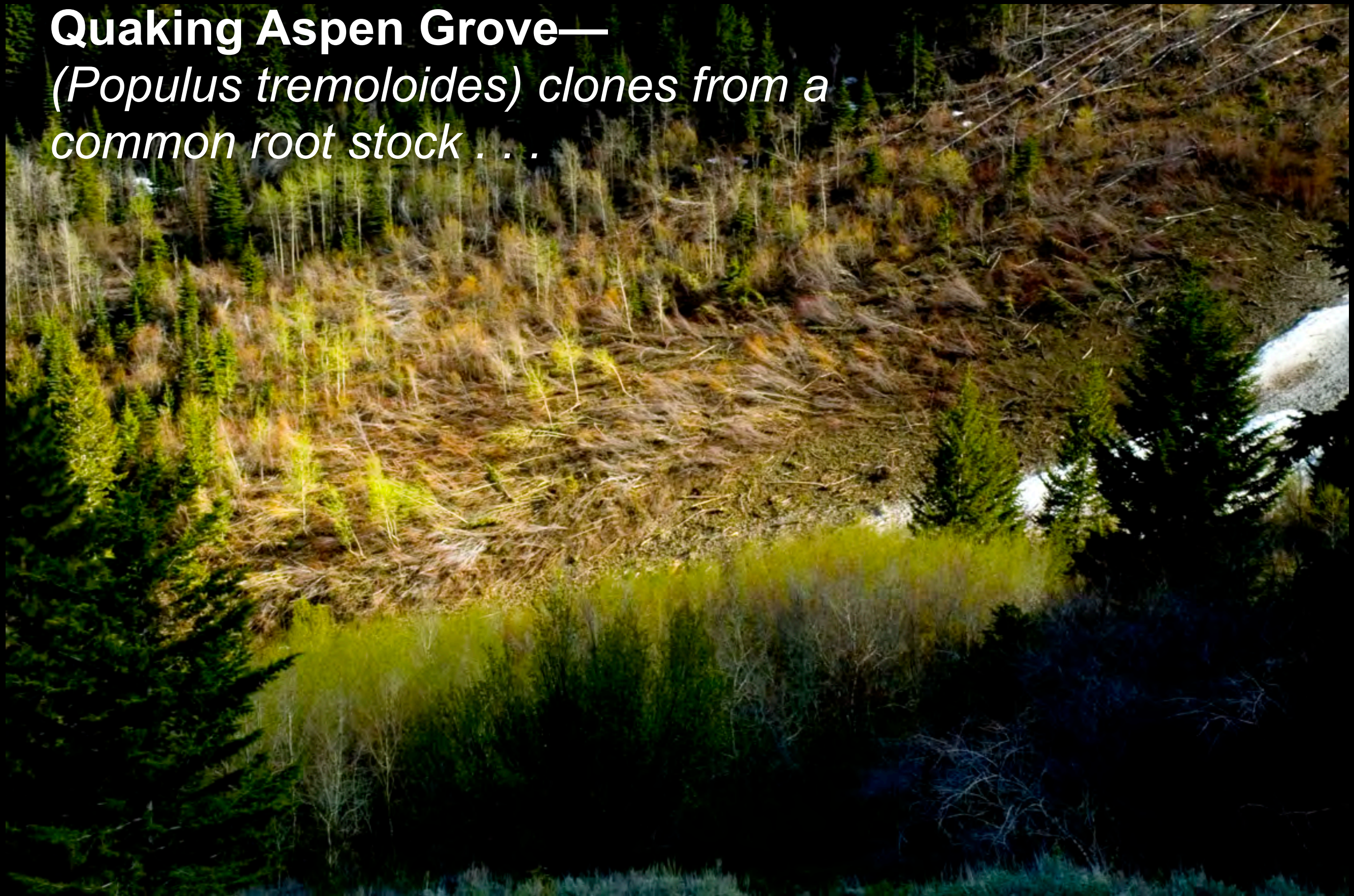


**Curleaf Mountain-Mahogany—**  
*close-up of flowers (Rose family)*





**Quaking Aspen Grove—**  
*(Populus tremuloides)* clones from a  
common root stock . . .





**Quaking Aspen Grove—**  
*(Populus tremuloides) the most widely  
distributed tree in North America . . .*









**Western Groundsel—**

*(Senecio integerrius)* notice *black-tipped bracts* . . .



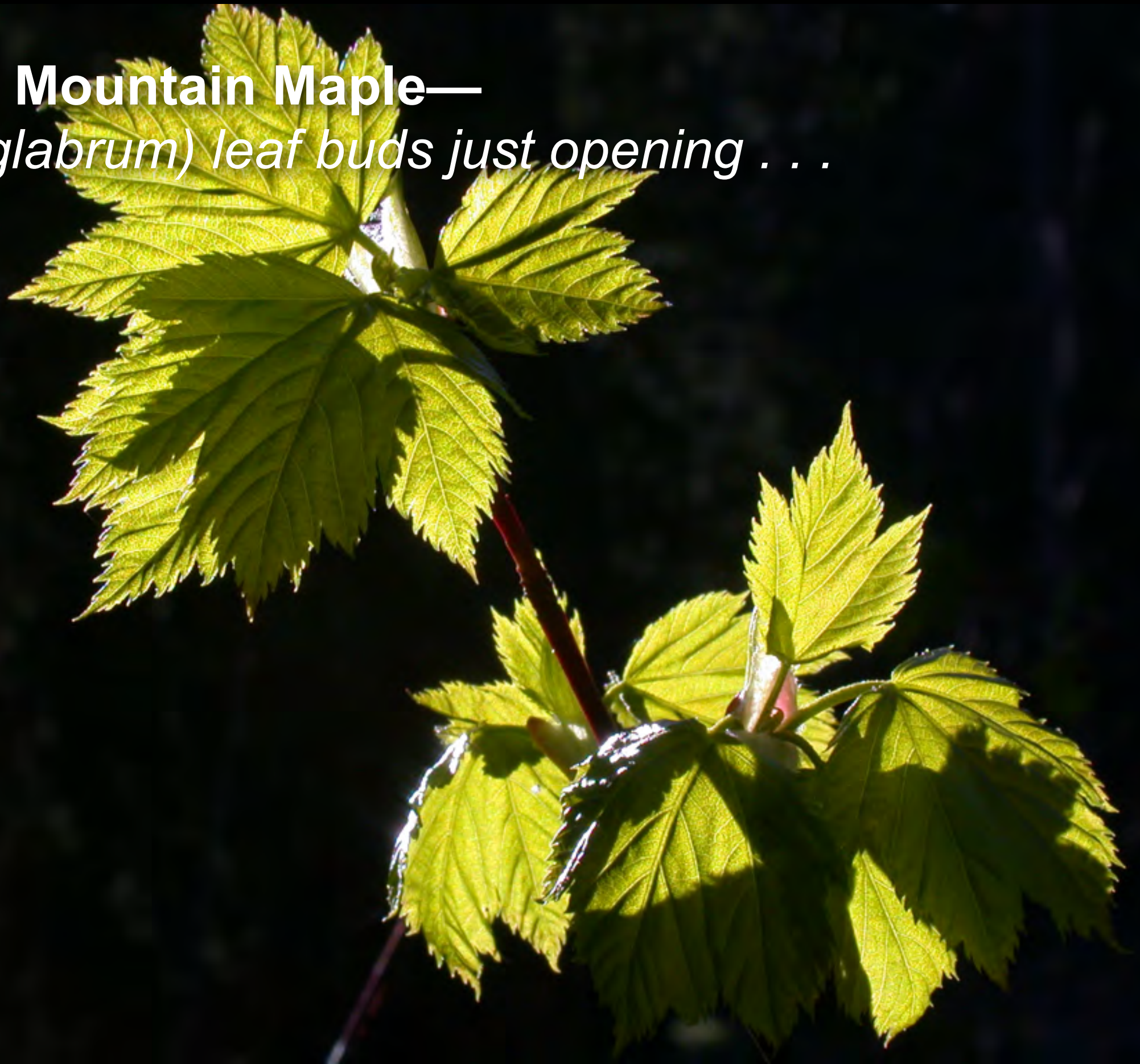


**Western Groundsel—**  
*skyview from below*





**Rocky Mountain Maple—**  
*(Acer glabrum) leaf buds just opening . . .*





**Piper's Anemone—**  
*(Anemone piperi) in Doug-fir understory . . .*





**Blue Violet** *ensemble* . . .





**Willow, *male catkins*—**  
*male & female flowers on separate trees . . .*





Flowers are to the background green  
of meadow and forest what a well-made poem  
is to the constant chatter of sounds that  
surrounds us. How strikingly beautiful they  
are, these centers where essences converge.



**Avalanche Snags at 3 m. (c. winter of 1964?)**  
*the trees were ripped off at snowpack surface!*  
***Landrum Slide, Hurricane Creek***





**Dwarf Mistletoe on Doug-fir**  
*Hurricane Valley at 1750 m.*



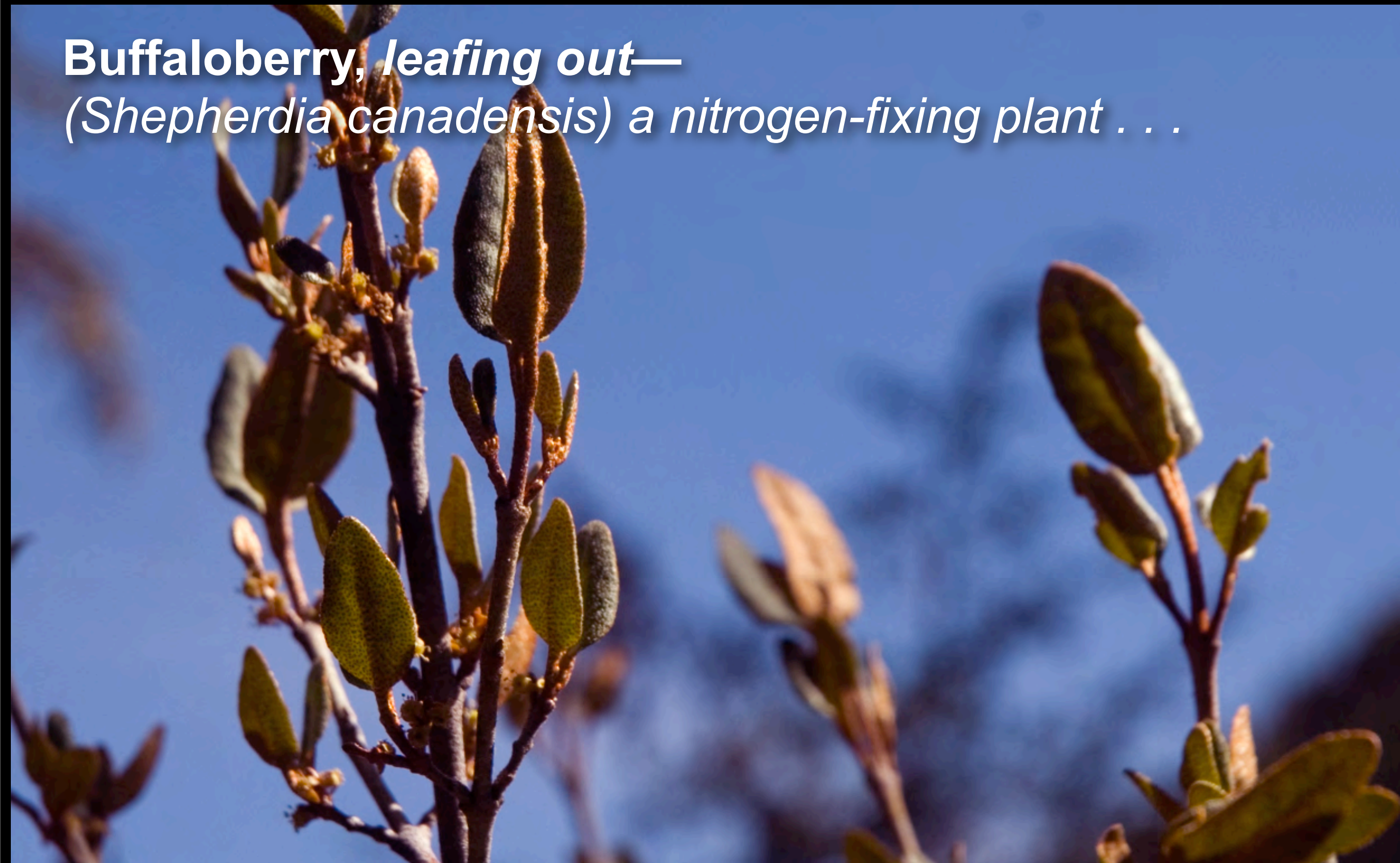


**Streamside Lomatium—**  
*(Lomatium dissectum) Wallowa River . . .*





**Buffaloberry, leafing out—**  
*(Shepherdia canadensis) a nitrogen-fixing plant . . .*





**Buffaloberry, *flower to fruit*—**  
*(Shepherdia canadensis)*





**Currant *leaf venation patterns*—**  
**(*Ribes* spp.)**





**Grand Fir, *needle close-up*—**  
*(Abies grandis)*





**Lodgepole Pine, *female strobilus* & *needle candle*—**  
*(Pinus contorta)*





**Sagebrush Buttercup, *close-up*—**  
*(Ranunculus glaberriumus) one of the first spring*  
*flowers . . .*





**Currant spines—**  
*(Ribes spp.)*





**Balsam Cottonwood, *leaves just opening*—**



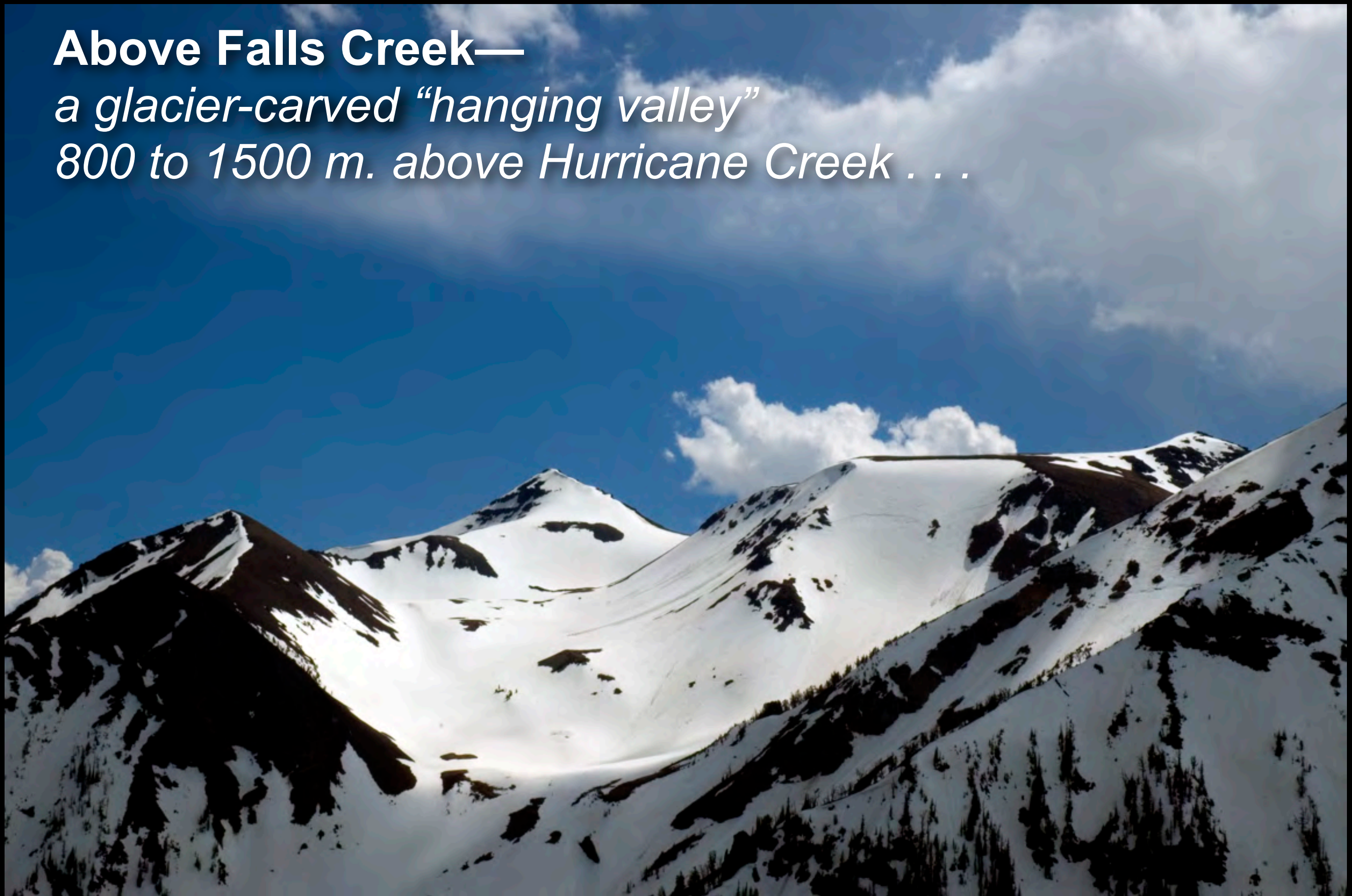


**The miracle of leaf venation patterns . . .**  
***How many levels of hierarchy do you***  
***see in the branching form?***





**Above Falls Creek—**  
*a glacier-carved “hanging valley”*  
*800 to 1500 m. above Hurricane Creek . . .*





**Sawtooth, seen from *Dug Peak* (looking West)**





**View South *from Dug Peak*, with the so-called  
“Matterhorn” on the left, and Glacier Peak  
& Eagle Cap under distant clouds . . .**





**Northwest ridgeline of *Chief Joseph*  
*Mountain . . .***









**Sacajawea, seen from Dug Bench—**  
*snowpack from V.25.2009 . . .*





**Evening *cloud flowforms*, Hurricane Creek . . .**





Fieldwork, *Dug Peak at 2600 m.*





**Mt. Chief Joseph, *seen from Hurricane Creek road, evening V.14.2009 . . .***









A scenic photograph of a mountain landscape. In the foreground, there are large, dark, jagged rock formations. Beyond them, a valley filled with dense evergreen trees is visible, partially covered in snow. In the background, more snow-capped mountain ranges stretch across the horizon under a blue sky with scattered white clouds.

# Photoweeek Northwest

*for the week of*

**VI.1.09**

photos & texts  
*by Cliff Crego*

© 2009 [picture-poems.com](http://picture-poems.com)





Daniel Murray, *Lamplight Cafe at Hampton Station* (pop. 11)



# Photoweeek Northwest I.26.2009

*35 new images & texts*

*made in the winter*

*High Wallows—*

*by Cliff Crego*

*pdf—*

*4.3 Mb*

© 2009 picture-poems.com



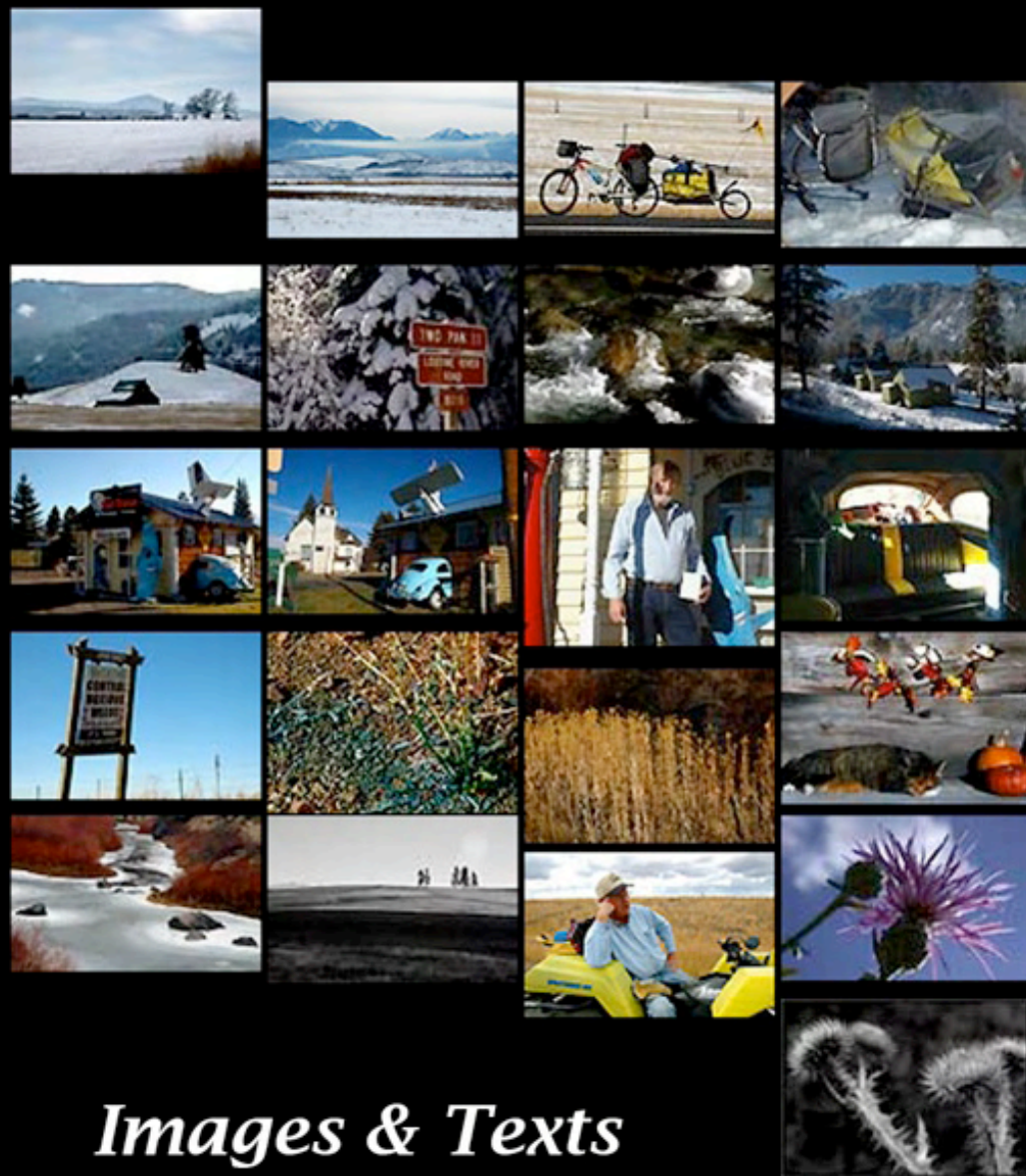
Photoweeek Northwest  
CALENDAR 2009  
*The High Wallows*  
photos by Cliff Grege

*order your Photoweeek Northwest*  
© 2009 picture-poems.com  
**Calendar 2009 online,**  
*under \$13 + shipping*

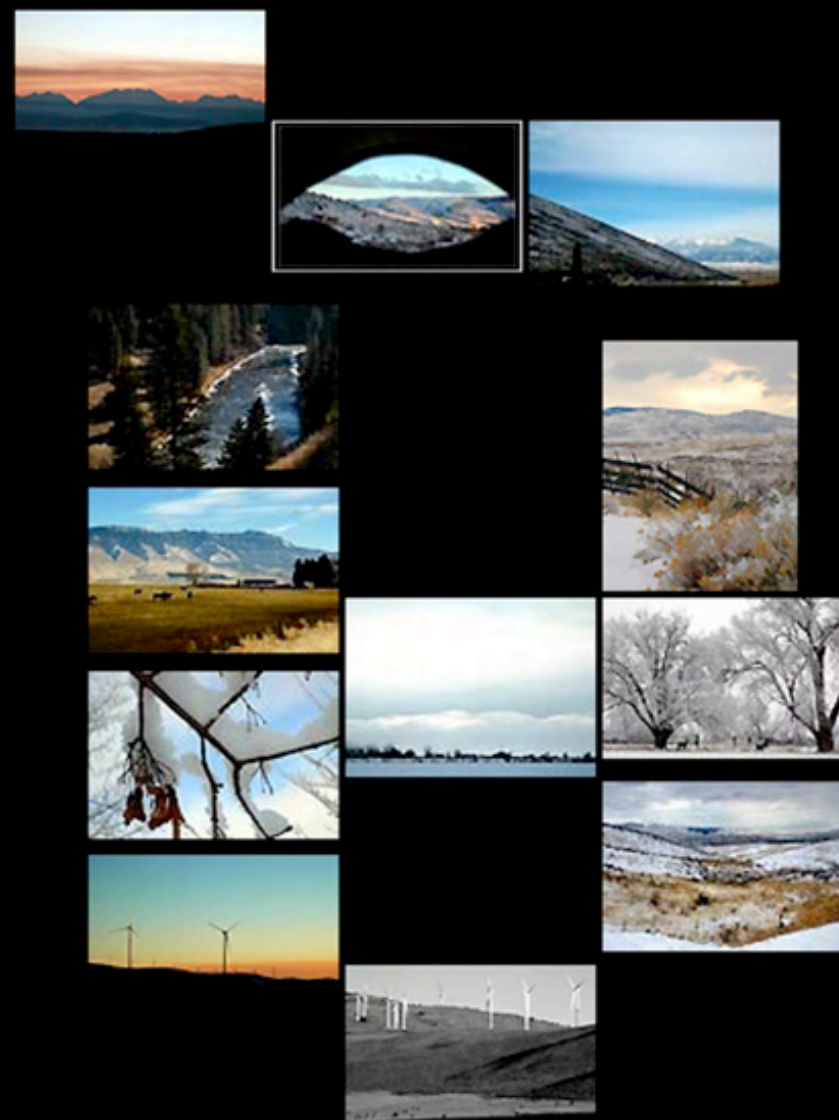




# PhotoWeek Northwest



*Images & Texts  
by Cliff Crego*



picture-poems.com



Browse selected images from  
this edition of  
Photoweb Northwest  
at  
the **PicturePoems online store**



**Thanks for viewing!**

You can contact

*Cliff Crego* at

[crego@picture-poems.com](mailto:crego@picture-poems.com)